



Zoomie

1200W Auto Pulsing Dust Extractor

User Manual



CHELSEA DIAMOND TOOLS

Auckland Office:

12 John Glenn Ave, Rosedale, Auckland, New Zealand 0632

PH: 09 415 5505

Sydney Office:

24/192A Kingsgrove Road, Kingsgrove, NSW 2208.

PH: 0404 880 668

Melbourne Office:

7 Gawan Loop, Coburg North, VIC 3058

PH: 0424 977 787

info@chelseadiamond.co.nz

Visit Our Website:

WWW.CHELSEADIAMOND.CO.NZ

WWW.CHELSEADIAMOND.COM.AU

INTRODUCTION

Thank you for purchasing the Chelsea Diamond Tools Industrial Vacuum Cleaner, a high-quality product based on the newest state-of-the-art technology. We hope that this device will be to your satisfaction and meet your expectations.



NOTICE!

1. These instructions are only for industrial vacuum cleaner type AC150H.
2. Please pay particular attention to the safety regulations and safety instructions.
3. Read the complete instruction manual before using.
4. All spare parts and accessories used with this device must be those specified by Chelsea Diamond Tools.
5. Check before and after use that all the switches are in OFF position.



The packaging material can be recycled. Please do not throw the packaging material into household waste; please send it for recycling.



Old devices contain valuable materials that can be recycled; these should be sent for recycling. Batteries, oil, and similar substances must not enter the environment. Please dispose of your old devices using appropriate collection systems.

Safety Instruction for Use

Please read and comply with these safety instructions prior to the initial operation of your device.

- ⚠ Retain these safety instructions for use for future reference.
- Please read the operating instructions for your machine before using it, and pay particular attention to the following safety instructions.
- Apart from the notes contained herein, the general safety provisions and rules for the prevention of accidents of the legislator must be observed.
- Check the power cord with mains plug for damage before every use. If the power cord is damaged, have it replaced immediately by the authorized customer service or electrician in order to avoid possible hazards.
- Never touch the mains plug with wet hands.

Power connection

- ⚠ Connect the electric plug to a power outlet with the correct voltage
- Make sure that the power cord or extension cables are not damaged by running over, pinching, dragging or similar. Protect the cable from heat, oil, and sharp edges.
- The power cord and the extension cable must be checked regularly for damages; such as cracks or aging. If damage is found, the cable must be replaced before further use.
- Do not connect the machine to an unearthed socket

Never vacuum up the following materials:

- Do not vacuum up any burning or glowing objects.
- Certain materials may produce explosive vapors or mixtures when agitated by the suction air!
- Explosive or combustible gases, liquids and dust particles (reactive dust particles)
- Reactive metal dust particles (such as aluminum, magnesium, zinc) in combination with highly alkaline or acidic detergents
- Undiluted, strong acids and alkalis
- Organic solvents (such as petrol, paint thinners, acetone, heating oil).

In addition, these substances may cause the device materials to corrode.

Application

- The operator must use the device properly. The person must consider the local conditions and must pay attention to third parties, in particular children, when working with the device.
- Never leave the device unattended if it is in operation and the power cord has not been pulled.
- Always use appropriate gloves while working on the device.
- The device may only be used by persons who have been instructed in handling the device or have proven qualification and expertise in operating the device or have been explicitly assigned the task of handling the device.
- This machine is not intended for use by persons (including children) with reduced physical, sensory or mental capabilities, or lack of experience and knowledge.
- Children should be supervised to prevent them from playing with the device.
- The device is to be fastened properly during transportation.

Maintenance

- Switch off the device and in case of devices connected to the power outlet, pull out the power cord before cleaning and performing any maintenance tasks on the machine. Shut the device off when switching to a different function.

-
- Maintenance work may only be carried out by approved customer service outlets or experts in this field who are familiar with the respective safety regulations.

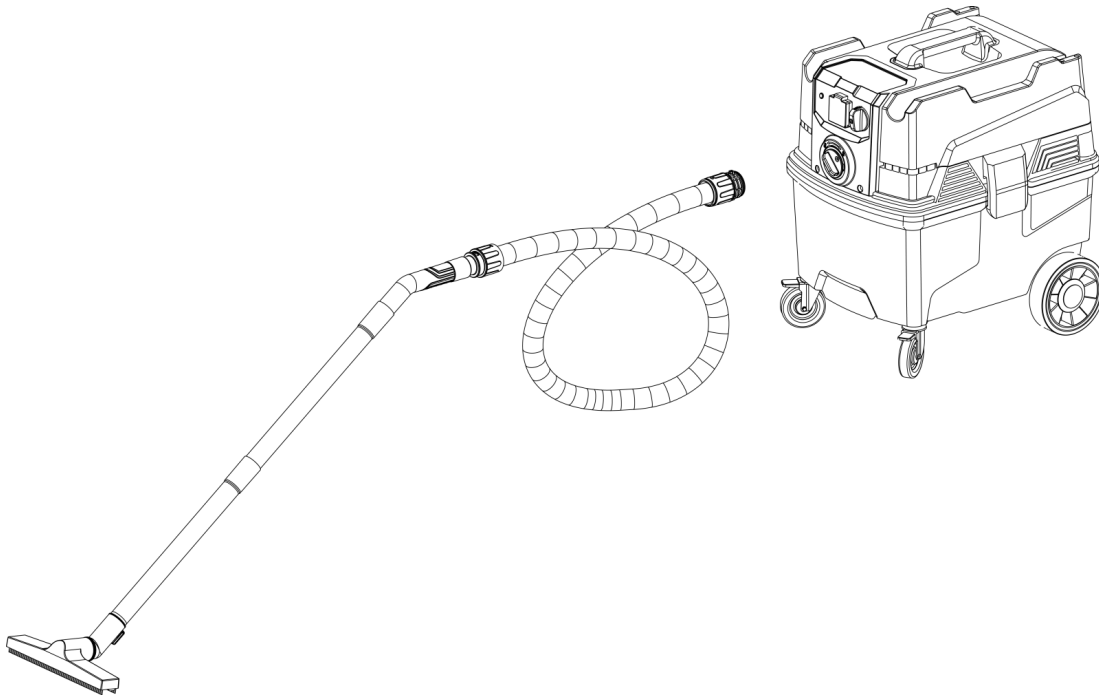
Starting Up

Bring the device to working position- secure it, if required, by locking the caster brakes.

⚠ Before assembling the floor tool set or any other optional accessory, please remember to check if they are all in good condition.

1. Connect the floor brush with the 2 straight wands.
Connect the hose with the wand via hose-cuff.
Connect the hose with the adaptor via hose-cuff

Finally, the floor tool set should be attached to the dust suction connection on the device. Remember to tighten the knob.

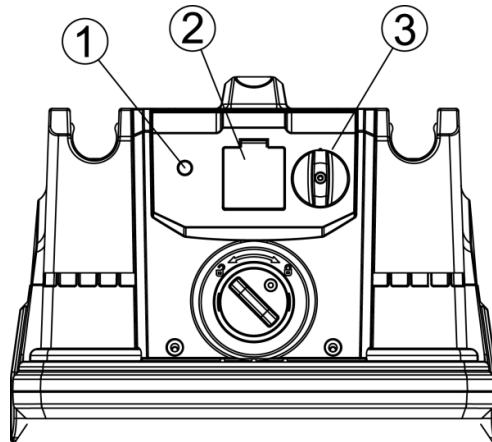


Chelsea Diamond Tools has a full library of floor tools and other accessories for your specific application. Check [our website](#) or contact our customer service for detail.

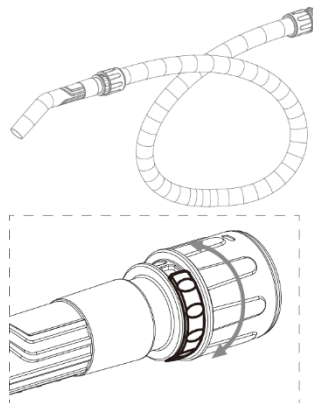
The dust extractor is started by the switch.

- ① Vacuum pressure indicating light (Light will be on when filter blocked, need to clean the filter deeply.)
- ② Socket (Power supply for power tools)
- ③ Power switch On/Off/Auto

On Start vacuum
0 Shutdown vacuum
Auto Start vacuum by the connected power tool, after power tool stops, vacuum will stop after 7 second's delay



There's a airflow adjusting ring on the handle, Airflow can be adjusted by rotating the adjusting ring, to meet different dust vacuuming needs.



Notice ! ! !

- **Make sure the electric plug and socket are matching**
- **Make sure the hose and inlet are matching**

Notice ! ! !

- **Turn off the machine until the motor stop working completely.**

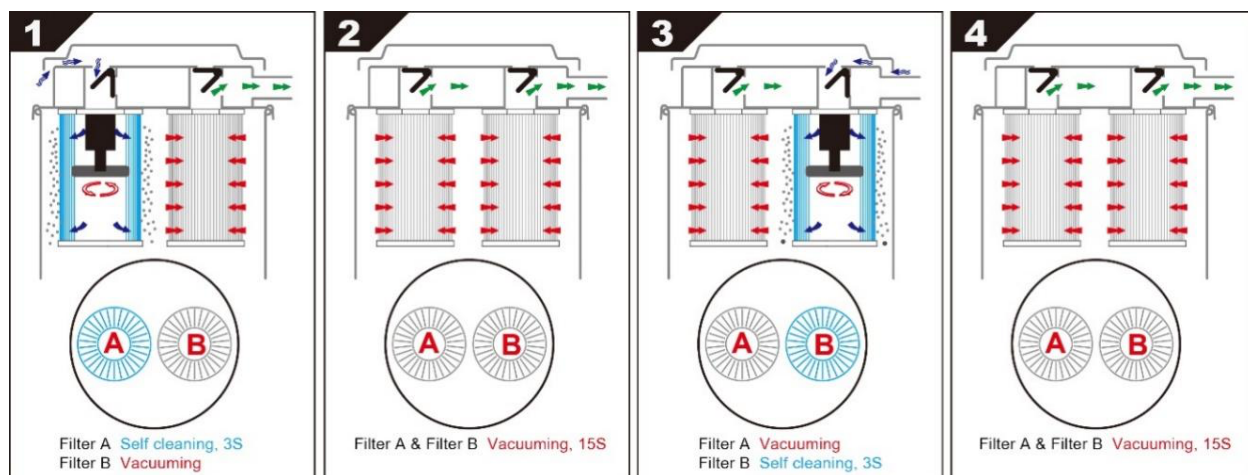
Dust-laden air is then sucked through the inlet valve at high speed via the suction hose. The air is slowed down by the cyclone and coarse dust particles are separated out, partly by centrifugal force and partly by gravity. Air and finer particles then pass through the filter system where separation is made. The machine is designed for filter cleaning by auto cleaning.

The separated dust accumulates in the cyclone until the machine is switched off, when it drops into the dust collection tank. The filter cleaning process is not completed before the dust inside the tank has fallen down into the collection tank. In some extreme cases the adhesive ability of the dust must be broken manually. This can be done by tapping the tank using i.e. a rubber hammer or taking out the filter and hitting it .

Innovated auto cleaning

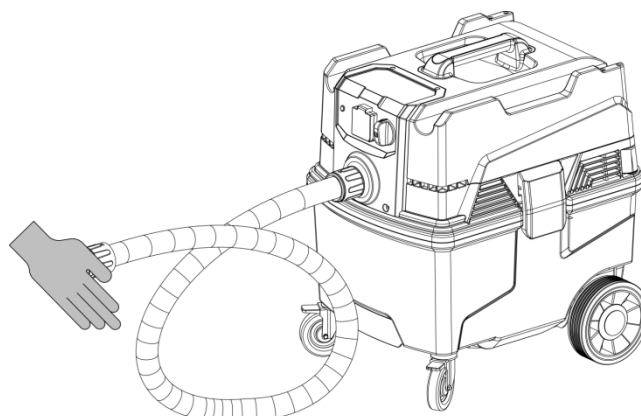
When start the vacuum, 2 filters will be cleaned alternately and automatically.

See instructions:



• Deep Clean Mode

In some special application, filter may be blocked, recommend the filter deep cleaning: start vacuum, cover the inlet with hand for 60 seconds.



**!!! If suction remains poor afterwards, the filters need to be replaced.
See instructions in chapter FILTER CHANGE.**

Cleaning, maintenance and storage

Empty and clean the vacuum cleaner after every use and whenever necessary.

No outside help is required for carrying out basic maintenance and cleaning. The device surface and the inside of the tank should be cleaned regularly using a damp cloth.

- Do not clean the device with a water hose or high-pressure water jet (danger of short circuits or other damage). Do not immerse the motor head into water for cleaning purposes.
- Empty the dust-collecting tank (refer chapter "emptying the dust collecting tank").
- Vacuum and wipe the device inside and outside with a damp cloth.
- This device must only be stored in a dry room, out of reach of unauthorized persons.

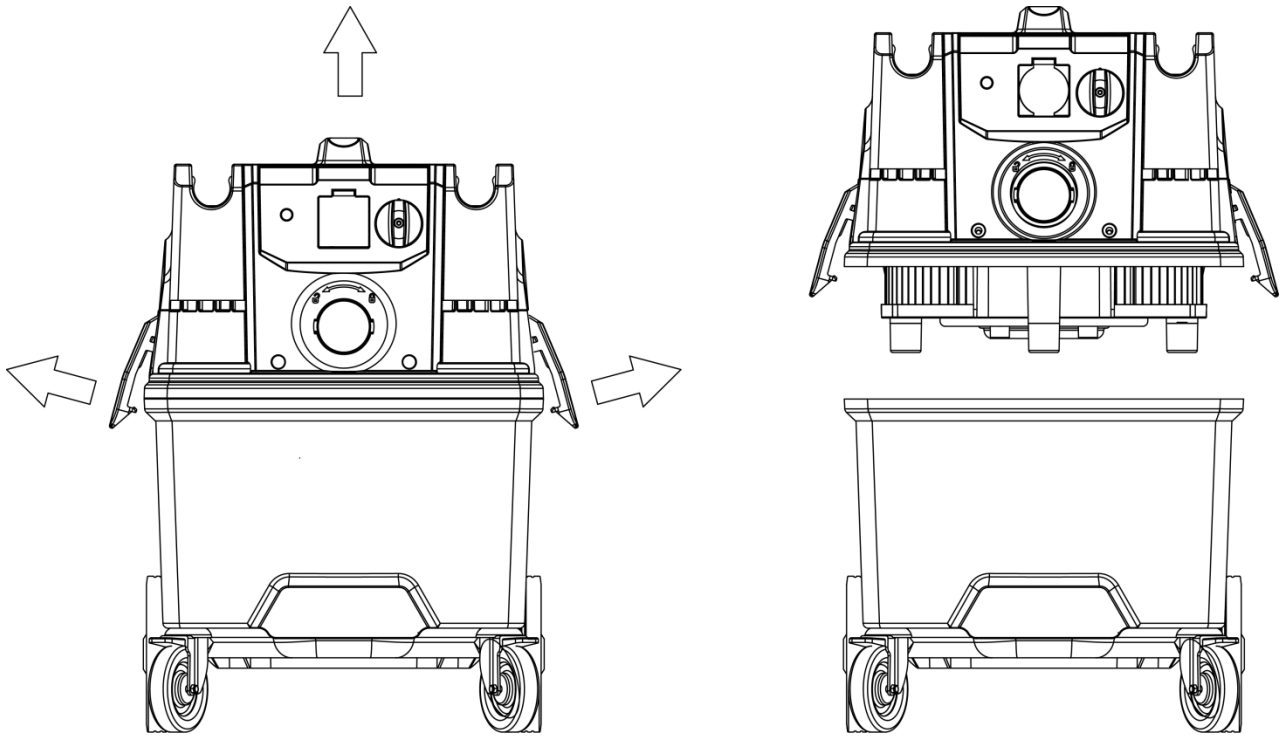
Emptying the dust collecting tank

To avoid too much filling of the dust collecting tank, need to check it regularly depending on the type and volume of the sucked in material.

Shut down the device and secure it using the parking brakes at the casters.

Open both sides buckle to separate the upper and lower container, fasten the dust collecting bag and take out from lower container.

When put a new plastic bag in lower container make sure the holes of the bag inside of the lower container, and then close both sides buckle.



Filter change

Risk of dust dispersion - Use personal safety equipment

Unhealthy dust can be spread during filter change. Accordingly, the user should wear protective glasses, protective gloves, and a breathing mask conforming to protection class FFP3

WARNING

Main filter:

Loosen the 2 buckles of both sides and remove the upper container, twist off the center screw on the metal strip and remove, take out the old filter and insert a new filter.

Important:

If you are removing the filter to clean it. Hitting the filter with force or use of compressed air will destroy the filter. It can handle water, but high-pressure water cleaning will destroy it.

SERVICE

- When cleaning and servicing the machine, you must switch off the machine, cut down the power tools from vacuum socket and remove the plug from the outlet.
- Avoid cleaning with a high-pressure cleaner. If necessary, do not direct at the openings on the machine, especially the opening for cooling air.
- Before moving the machine from the work area, the machine must be cleaned.
- All other equipment must be regarded as contaminated and be treated thereafter.
- If possible, use a special suitable room.
- Proper personnel protective equipment must be used. Dust can be spread when the coarse filter and the absolute filter are replaced that can be hazardous to health. Accordingly, the user should wear protective glasses, protective gloves, and a breathing mask conforming to protection class FFP3.
- All parts which are contaminated after service must be properly disposed of in plastic bags according to all regulations.
- If the machine must be used for other purposes, it is extremely important that the machine is cleaned, to avoid the spread of hazardous dust.
- Do not puncture the filter. Risk of dust dispersion.

WARRANTY

The Zoomie Dust Extractor and Accessories come with a 12-month limited factory warranty against defects in materials and faulty workmanship. Additionally, there is a 6-month warranty for the electric motor. The warranty commences from the date of purchase and receipt by the original end user.

Chelsea Diamond Tools shall not be liable for any defects caused by circumstances that occur after the products have been delivered and whilst the products are in the possession of the purchaser. Furthermore, the warranty does not include normal wear and tear or deterioration. Wear parts are not warranted.

The warranty is not applicable to a defect that arises due to tools or parts that are not original to Chelsea Diamond.

The warranty herein is non-transferable and only applies to the original owner or purchaser of the machine.

In the event of any complaint, the suction apparatus or an agreed part of it must be returned to us or our authorized representative for warranty examination and for any warranty repair or replacement.

PROBLEM SOLVING

The dust extractors are designed and manufactured for severe environments and tasks, but the user must note that the machine must be protected from knocks and blows. Filter, seals, attachments, and connections are carefully adapted and selected regarding the operator's work environment. Therefore, the operator and service personnel must treat the machine with care to it to work correctly for many years. Follow this instruction one by one for problem shooting.

Issue	Cause	Solution	Note
Machine doesn't start	No Power	Check whether the socket is powered	
	Fuse on PCB is burned out	Replace fuse	
	Motor failure	Replace a new motor	If auto clean works, but the motor doesn't work, It can be determined that it is a motor failure
	PCB defective	Replace a new PCB	If neither auto clean nor motor doesn't work, It can be determined that it is a PCB defective
Motor runs but poor suction	Airflow adjustable knob is at the minimum position	Adjust the knob clockwise with larger airflow	
	Non-woven dust bag is full	Replace dust bag	
	Filter clogged	Dump the dust in the bin	If the operator didn't use the non-woven filter bag, the filters will be buried in the dust when the dustbin is very full, which will cause filter clog
	Filter clogged	Use the deep clean mode(See the user manual for operation)	The dust is sticky in some working, even the deep clean mode can't get the dust on the filter down, please take out the filters and beat slightly. Or wash the filters and dry them thoroughly before install.
	Filter clogged (Auto clean failure)	Check if the drive module and reversing valve assembly can work. If not, replace a new one.	Take down the filters, check if the 2 motors in the reversing assembly can work. Normally, they are rotate working every 20 seconds. 1)If one motor works all the time, it's the problem of the B0042 drive module, change a new one. 2)If one motor doesn't work at all, but another one works intermittently, it's the problem of the failed motor, replace a new B0047-Reversing valve assembly

Dust blown from motor	Improper installation	Re-install the filter tightly	
	Filter damaged	Replace a new filter	
Motor abnormal noise	Motor failure	Replace a new motor	

NOTE! ! ! _____



Any other problem please contact Chelsea Diamond Tools order service

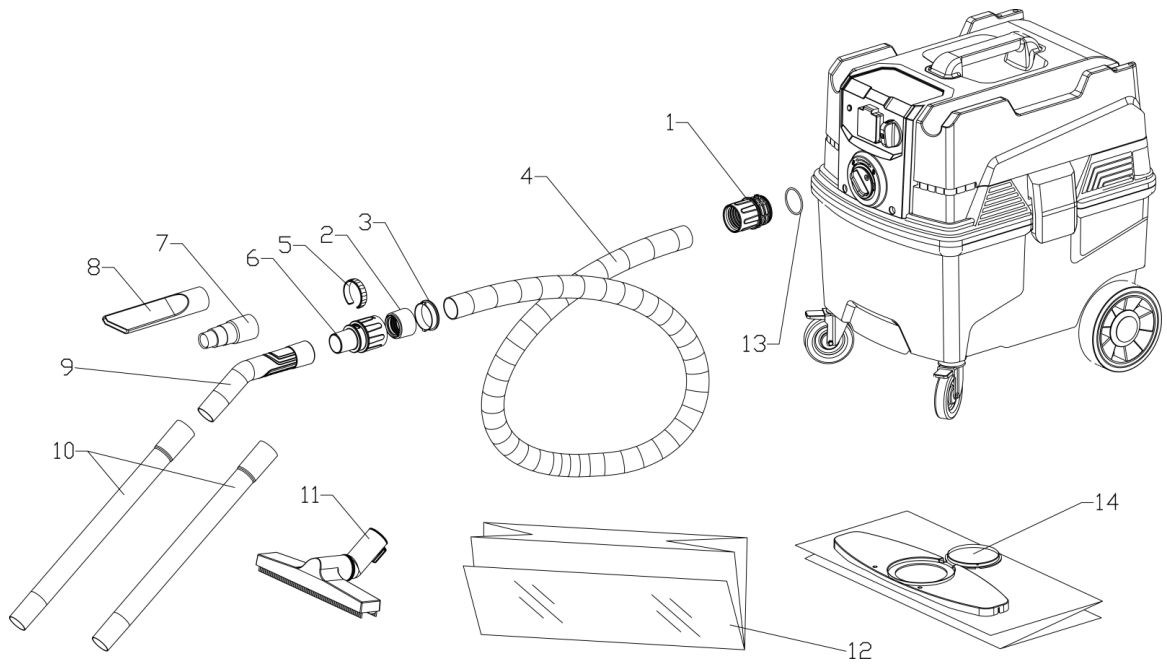
Accessories and Spare Parts

- Only use accessories and spare parts which have been approved by the manufacturer. The exclusive use of original accessories and original spare parts ensures that the device can be operated safely and trouble free.
- At the end of the operating instructions, you will find some exploded diagrams about the main assemblies of the device. In these diagrams you could search the spare parts you may need.
- For additional information about spare parts, please check the local distributors.

Technical Data

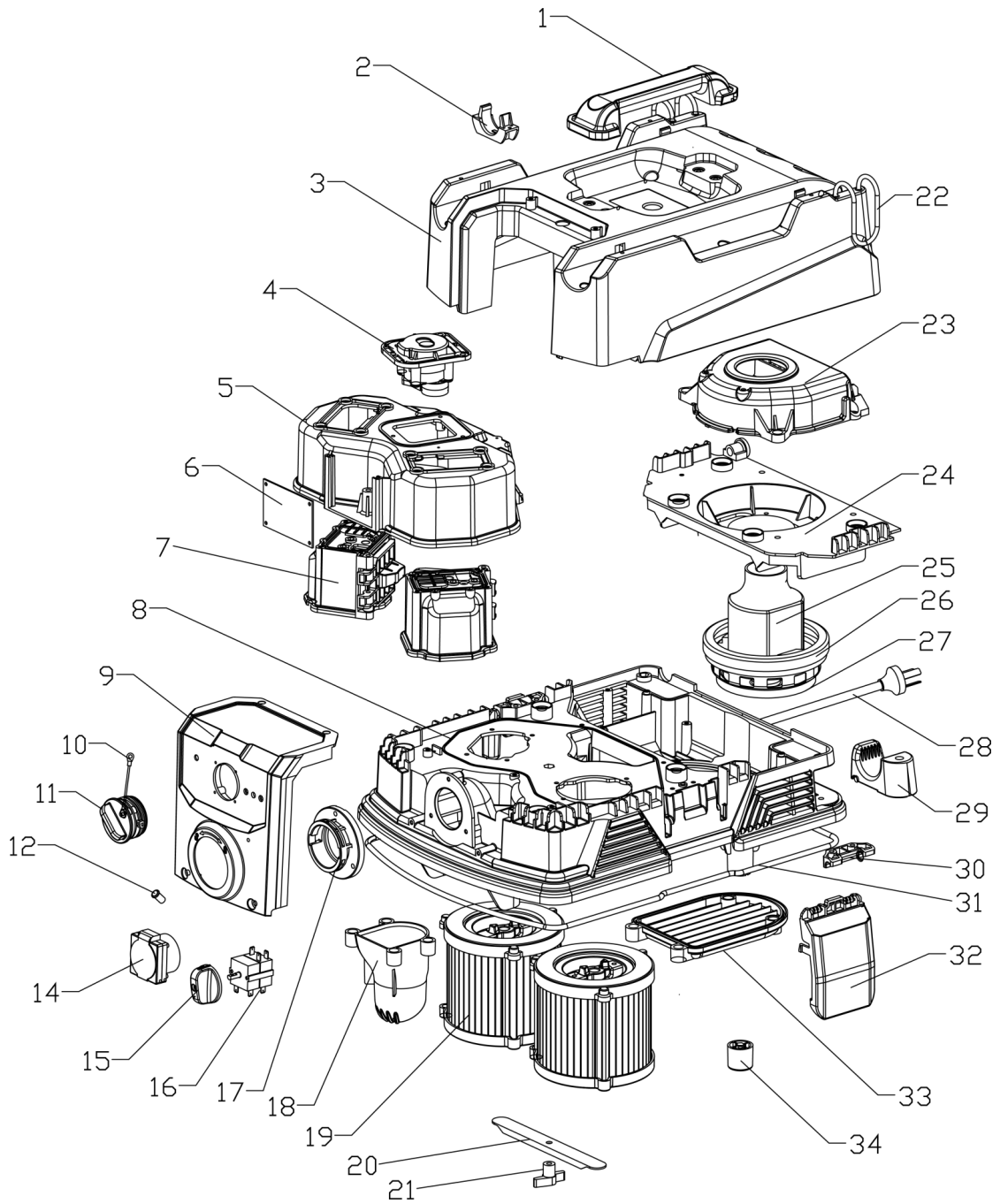
Data	Unit	Zoomie
Voltage	V	220-240V 50/60HZ
Power (max)	KW	1.2KW
	HP	1.7HP
Airflow (max)	M ³ /H	262
	Cfm	154
Filter quantities	Pcs	2
Filter efficiency		HEPA, > 99.95%@0.3µm
Filter cleaning		Innovated auto cleaning
Airflow adjustable		YES
Power socket	Amps	10
Power tool quick start		YES
Remote control start		Optional
Tank volume		38L
Dimensions (L*W*H)		385X500X570mm
Weight		13.5kg

**Zoomie
Packing list**



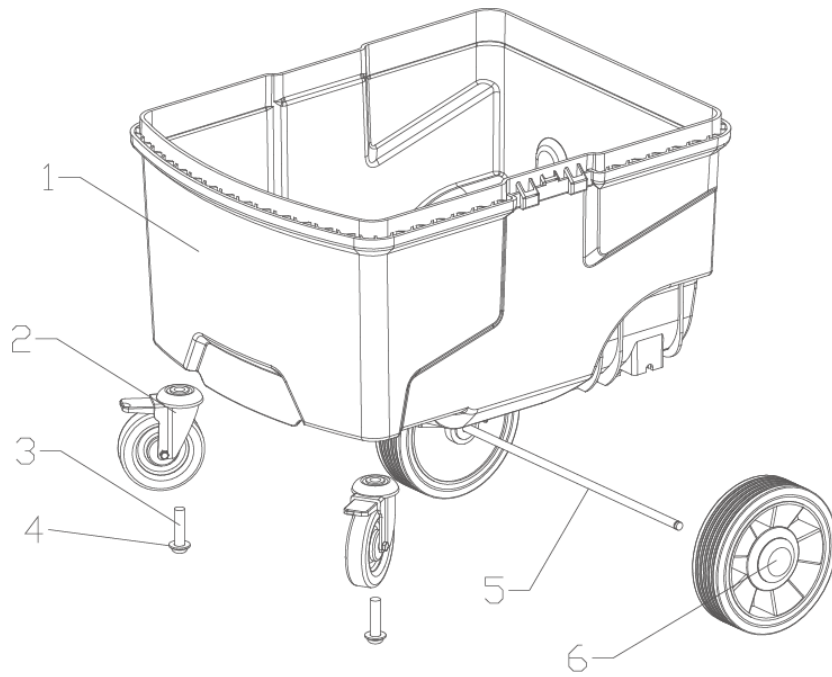
S/N	P/N	Description	Quantity	Specifics
1	C3067	D35 Hose cuff 1-vaccum side	1PC	Conductive PP
2	C3086	D35 Thread tightening head	2PCS	
3	C3087	D35 Bayonet coupling	2PCS	Conductive PP
4	S8071	D35 Anti-static hose	4M	
5	C3080	Airflow adjust ring	1PC	
6	C3068	D35 Hose cuff 2-handle side	1PC	Conductive PP
7	S8072	D35 Reducer adapter	1PC	
8	S8073	D35 Crevice tool	1PC	
9	C3082	D35 Bent wand handle	1PC	Conductive PP
10	S8075	D35 Straight wand	2PCS	D35*450
11	S8074	D35 Floor brush	1PC	L300
12	S8078	PE dust bag	5PCS	
13	S0112	O shape ring	1PC	48*3.5
14	S8086	Non-woven dust collection bag	1PC	

Zoomie
Exploded views



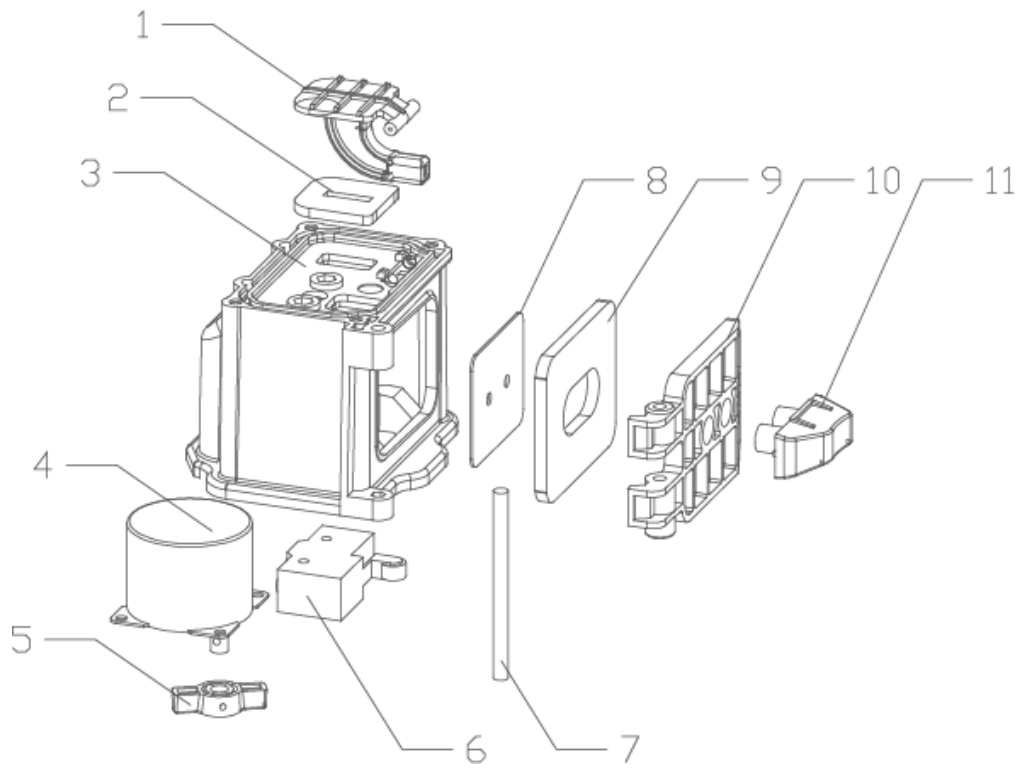
S/N	P/N	Description	Qty	Specifics
1	C3058	Lifting handle	1	
2	C3070	Hose clamp	4	
3	C3059	Top cover	1	
4	B0042	Driving module	1	230V
5	C3063	Air hood	1	
6	S1102	Control module PCB-2025 version	1	
7	B0047	Reversing valve assembly	2	230V
8	C3060	Center cover	1	
9	C3062	Panel	1	
10	S0115	lanyard	1	
11	C3090	Inlet seal complete set	1	
12	S1072	Vacuum pressure indicating light	1	With cable and terminal
14	S1104	10A power output socket (AU/230V)	1	AU Standard 230V-10A
15	C3095	Knob cap	1	
16	S1096	Selector switch	1	
17	C3066	Flanged fitting	1	
18	C3091	Dust bag air inlet	1	
19	S8076	Filter assembly	2	
20	C2247	Filter support strip	1	
21	S0097	Hand nut	1	M6
22	S0114	Elastic string	2	Φ4-0.5m
23	C3064	Motor cover	1	
24	C3065	Motor holder	1	
25	S1065	Single phase bypass motor	1	230V-1200W
26	C3007	Motor damping ring	1	
27	C3089	118 motor damping rings	1	
28	S2002	Power cord with plug 230V	1	3*1.5 Length 8m RVV-10A AU plug
29	C3073	Hose holder	2	
30	C3072	Buckle holder	2	
31	S0113	Sealing ring	1	Φ6-1.6m
32	C3071	Buckle	2	
33	C3069	Cover plate	1	
34	C3088	Foot pad	2	

**Zoomie
Dustbin kit**



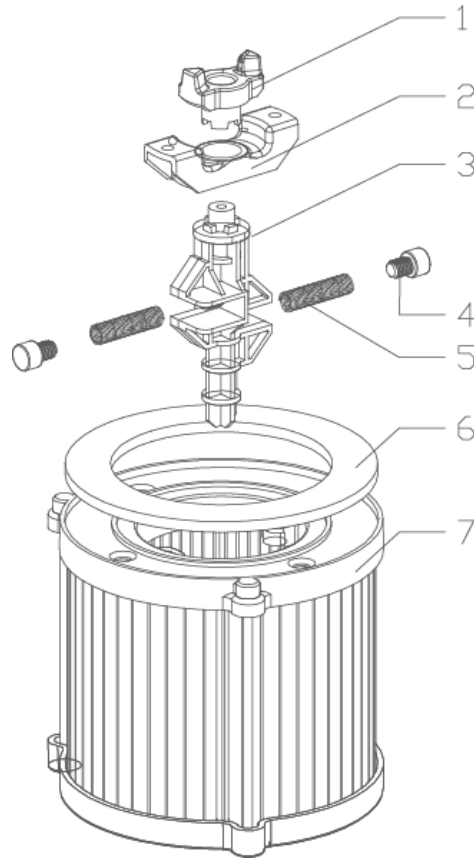
S/N	P/N	Description	Qty	Specifics
1	C3061	Dust collection container	1	
2	S9038	3" universal wheel	2	
3	S0102	Hex socket bolts with half round head	2	M10*40
4	S0107	Spring washer	2	M10
5	C2246	Axle	1	
6	S9039	6" back wheel	2	

**Zoomie
Drive Module**



S/N	P/N	Description	Qty	Dimension
1	C3038	Reverse air door	1	
2		Sealing gasket	1	
3	C3081	Directional valve seat	1	
4	S1068	Speed down motor	1	50KTYZ-230V 8 turns
5	C3079	Filter finger assembly	1	
6	S1069	Limit switch	1	LXW5-11G2
7	S0111	Pin	1	5*80
8	C2286	Square gasket	1	
9		Sealing gasket	1	
10	C3037	Air door	1	
11	C3085	Air door pressure plate	1	

**Zoomie
HEPA filter**



S/N	P/N	Description	Qty	Specification
1	C3076	Filter finger assembly 1	1	
2	C3077	Filter finger assembly 2	1	
3	C3078	Filter finger assembly 3	1	
4	S0108	Hexagon socket head nylon bolt	3	M8*12
5	S0110	Extension spring	2	
6		Sealing gasket	1	
7	C3074	HEPA filter top cover	1	
8		Filter material	1	
9	C3075	HEPA filter bottom cover	1	
10		Sticker	1	